

RINOL

ROR  
Flooring Products



# RINOL *INDUSTRY*

Coating systems for industrial applications

# RINOL

SYSTEMS ARE:

seamless

antibacterial

variety of  
colours

anti-slip

easy to clean &  
hygienic

mechanically  
robust

thermally  
durable

non-porous

low emission

liquid  
proof

easy to  
repair

visually  
attractive

chemical  
resistant

For over 60 years, RINOL industrial flooring has enjoyed a worldwide reputation for reliability, precision, quality, and economy!

Our research and development department works permanently and consistently on new and further developments of products and systems. RINOL's aim is to support our customers and partners with innovative products and system solutions based on epoxy, polyurethane, vinyl ester or polyester resins.

Each system typically comprises two or three layers applied in sequence to the concrete surface - a primer, a levelling compound and finally the coloured coating. This process ensures a high-quality, durable, and attractive surface.

All components and ingredients for our coating systems are tested and produced by ourselves. This guarantees the highest quality, fastest availability and optimal properties of our products. Our RINOL cast resin systems are tested for your safety by renowned, independent experts and accredited institutes, such as the German Institute for Building Technology.

In addition to industrial floors, RINOL systems are also suitable for showrooms, exhibition spaces, schools, public buildings, and flats. In addition, the company can create special systems to suit a customer's exact application - all certified to ISO9001. Furthermore, RINOL has a multitude of test certificates of all kinds to meet the high requirements towards synthetic resin coatings.

Choosing a RINOL coating offers important advantages for owners and users of a building, such as chemical resistance, abrasion resistance and an attractive and seamless surface.

RINOL also offers a wide range of RAL and NCS colours. With no minimum order quantity, designers can enjoy the freedom to work creatively in smaller spaces.

For more information, please visit [www.rinol.de](http://www.rinol.de).







## GOING GREEN

Sustainable building has become more and more important worldwide in recent years. Today, a wide variety of country-specific requirements and certifications are needed. However, all countries and certification systems have one thing in common - they want to create more ecological sustainability in the construction industry.

Our research and development department works permanently and consistently on new and further product developments. RINOL's aspired goal is to offer our customers and partners innovative and sustainable products and system solutions that differ from other products in terms of durability, efficiency, ecology and aesthetics and generate added value.

The health and well-being of people working in indoor areas in a wide range of industries are not only determined by climatic conditions and impurities in the air. Sustainable and environmentally compatible products that are low in emissions not only support the environment, but also ensure a healthy indoor climate.

The fact that RINOL products and systems fulfil many criteria and are environmentally compatible is shown by the tests according to AGBB, Eurofins, ISEGA and LEED.





# INDUSTRY

In industry, high loads are placed on a floor every day. Depending on the branch of industry and the work area, very different demands are placed on the floor covering selected.

Every user has different needs that they place on their new floor covering. In addition to durability, slip resistance and good cleanability, there are also requirements for chemical resistance and conductivity.

In recent years, a wide variety of colour concepts have also become established in industry. For example, roadways or walkways in production areas are increasingly being colour-coded to increase accident prevention. But also conductive production areas can be separated from storage areas in this way.

We have defined frequently asked requirements as a system to create a basis. Of course, we can always put together a special system for almost any requirement from a large product portfolio.

## Properties

- Robust and durable
- Hygienic and waterproof
- Seamless
- Chemical-resistant
- Smooth or non-slip surface
- Easy to clean
- Low odour development during application

## Areas of application

- Warehouses and storage areas
- Automotive industry
- Pedestrian areas
- Footpaths
- Workshops
- Production areas
- High rack warehouses

# CHEMICAL RESISTANCE

Flooring in various industrial and production areas not only has to withstand a wide variety of mechanical stresses, but also a wide variety of chemical attacks. Thus, coated surfaces should be resistant to media that occur daily in a variety of applications, depending on their use.

The following overview shows various test results (resistant, conditionally resistant, unstable).

Chemicals	RINOL EP-C523			Chemicals	RINOL EP-C523		
	resistant	medium resistant	not resistant		resistant	medium resistant	not resistant
Aluminium chloride	X			Lactic acid 90%		X	
Ammonia 10%	X			Oil - diesel oil, heating oil, motor oil	X		
Apple juice	X			Phenol 5%		X	
Benzyl alcohol	X			Detergent - alkaline	X		
Methylated spirits		x		Cleaning agent - acidic	X		
Diesel fuel	X			Nitric acid 5%	X		
Acetic acid 10%	X			Nitric acid 50%			X
Acetic acid 20%		X		Hydrochloric acid 37	X		
Acetic acid 60%			X	Salt water (sodium chloride solution)	X		
Aviation fuel - IP4	X			Sulphuric acid 70%	X		
Antifreeze (ethylene glycol)	X			Tartaric acid 15%	X		
Urea	X			Xylene		X	
Aviation fuel	X			Citric acid 20%	X		-
Lactic acid 5%	X			Citric acid 50%		X	

The resistance to chemicals was tested in a standard climate (23°C air and material) according to DIN 50014-23/50-2. The coating was exposed to the test liquid in accordance with DIN 53168. The assessment is based on the criteria of appearance, hardness and blistering or destruction of the surface. Daily maintenance cleaning is assumed. The chemicals must be removed immediately after application and rinsed with water.







## COLOUR DESIGN

In addition to a large variety of different coating systems, there is an even larger selection of colour shades that can make your surface appear in the desired colour concept. In this way, partial areas such as storage and production areas and driveways can be distinguished from other areas in terms of colour.

### The advantages of a coloured design:

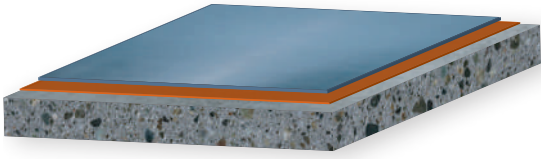
- Representative appearance and highest aesthetics
- Individual design
- Increased safety at work due to colour coding
- Escape routes are more clearly marked

RINOL also offers a wide range of RAL and NCS colours. With no minimum order quantity, designers can enjoy the freedom to work creatively even in smaller spaces.

# RINOLSEALING

RINOLSEALING is an economical surface protection with optimised performance for light to stressed industrial floors. The jointless, dust-binding sealing system protects and hardens surfaces.

Layer thickness approx. 0.5 - 0.8 mm.



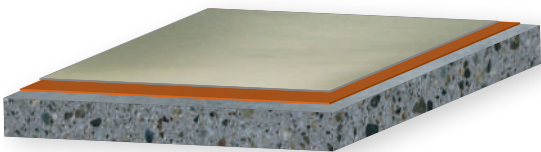
-  RINOLEP-S600 Sealer
-  RINOLEP-P206 Primer




# RINOLSEALING THIXO

The RINOLSEALING THIXO sealing system is an economical surface protection with a dimpled structure. The dust-binding, hard-wearing sealing system can be applied to the existing floor without joints.

Layer thickness approx. 0.5 - 0.8 mm.



-  RINOLEP-S643 Sealer
-  RINOLEP-P206 Primer

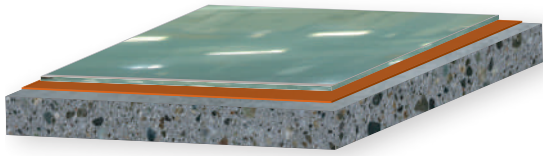




# RINOLSTANDARD

RINOL*Standard* is a durable solution for floors subject to medium to heavy wear that has been tried and tested millions of times. The hard wearing, jointless surface of the pigmented flow coating can be designed to be both smooth and slip-resistant. As an option, the surface can be given a matt finish.

Layer thickness approx. 1.0 - 2.0 mm.

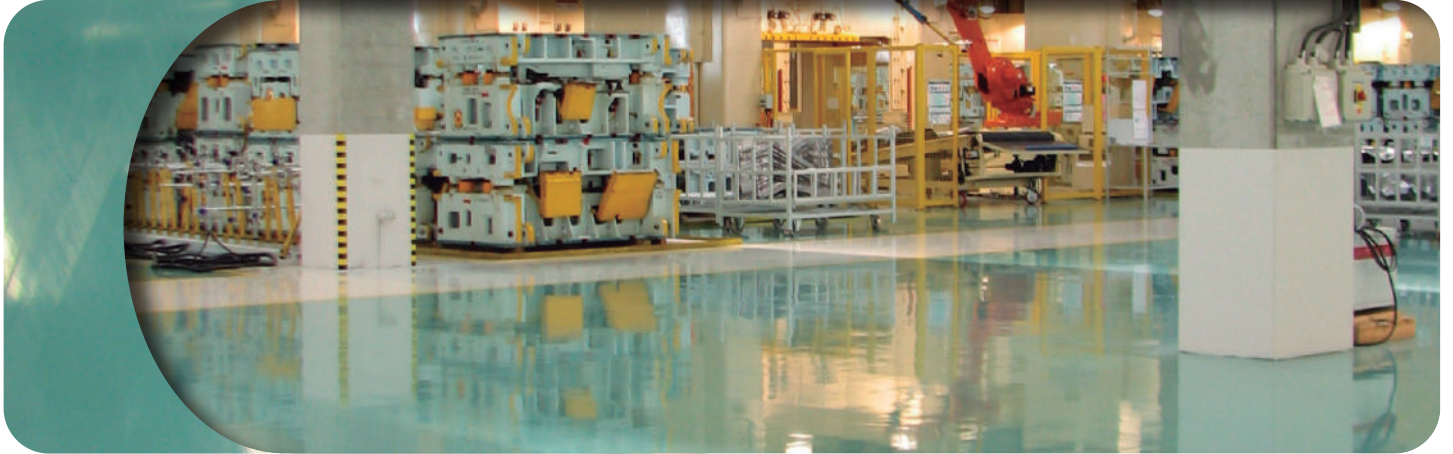


 RINOLEP-C523

Self-levelling coating

 RINOLEP-P202

Primer

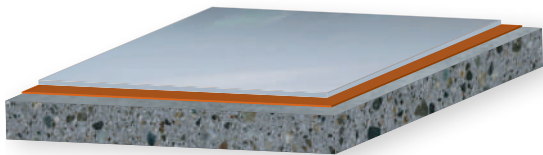


# RINOLSTANDARD LE (low emission)



RINOL*Standard LE* is a particularly low-emission flow coating for floors subject to medium to heavy wear. The hard-wearing, seamless surface of the pigmented flow coating can be made both smooth and slip-resistant. This system meets many criteria and is environmentally friendly, as demonstrated by Eurofins and LEED tests.

Coating thickness approx. 1.0 - 2.0 mm.



 RINOLEP-C528

Self-levelling coating

 RINOLEP-P218

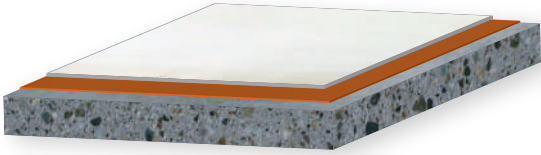
Primer





# RINOLSTANDARD CR

RINOLSTANDARD CR is a highly chemically resistant coating system for floors exposed to medium to heavy loads. RINOLSTANDARD CR is used as a coating for reinforced concrete, concrete and screed surfaces in production and storage areas, HBV facilities in accordance with § 62 WHG (Water Resources Act) without crack bridging. The jointless surface can be made both smooth and non-slip. Layer thickness approx. 2 mm.



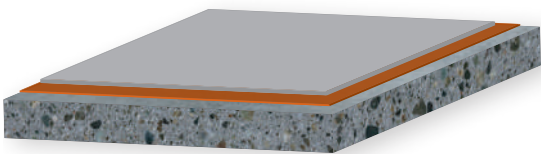
- RINOLEP-C529      Self-levelling coating
- RINOLEP-P202      Primer



# RINOLWHG



RINOLWHG is a LEED v4 certified water protection coating with permanent crack bridging (up to 0.4mm AbZ / up to 0.5mm sPz). The RINOLWHG system, which has been tested by the DiBT, is used as a coating for reinforced concrete, concrete and screed surfaces in HBV facilities (production, treatment, use) and LAU facilities (storage, filling, transfer) in accordance with the WHG (Water Resources Act). The surface is hard-wearing, non-porous and highly resistant to chemicals. Layer thickness approx. 2.5 mm



- RINOLEP-C526      Self-levelling coating
- RINOLEP-P204      Priming/scratch layer

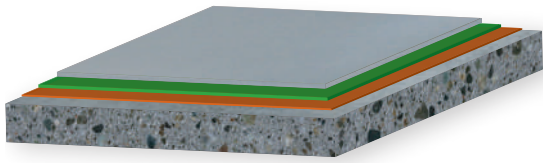





# RINOLALLROUNDER EP

This extremely versatile epoxy resin floor coating for medium to heavy duty industrial floors is applied in three coats. The durable, hard-wearing surface ranges from smooth to slip-resistant. Good chemical resistance rounds off the system properties.

Layer thickness approx. 3 mm.



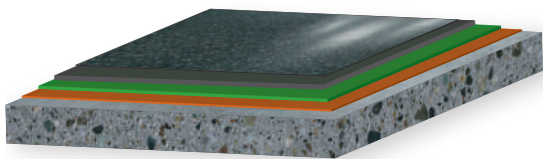
-  **RINOLEP-C523** Self-levelling coating
-  **RINOLEP-L300** Levelling layer
-  **RINOLEP-P202** Primer


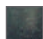




# RINOLALLROUNDER PU

This extremely versatile polyurethane floor coating for medium to heavy duty industrial floors is applied in three or four coats. The durable, hard-wearing surface ranges from smooth to slip-resistant. Good chemical resistance rounds off the system properties.

Layer thickness approx. 3mm - 4mm



-  **RINOLPU-S686** Sealer
-  **RINOLPU-C500** Self-levelling coating
-  **RINOLPU-L300** Levelling layer
-  **RINOLEP-P202** Primer



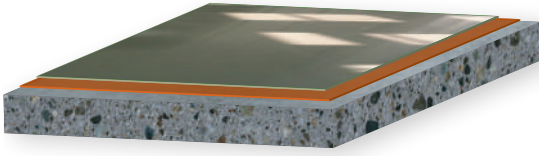




# RINOL*PERM*

is a water-based, solvent-free sealing system for lightly loaded industrial floors. The jointless, dust-binding sealing system protects surfaces and can optionally be made slip-resistant.

Layer thickness approx. 0.3 - 0.5 mm.



 **RINOLEP-S680**

Sealer (1-2 layers)

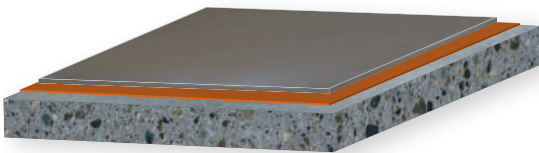
 **RINOLEP-S680**

Primer



# RINOL*STANDARD ECO*

RINOL *Standard ECO* is a particularly low-emission, vapour-diffusible, water-based flow coating for jointless floors. The hard-wearing surface of the pigmented flow coating can be made both smooth and slip-resistant. Layer thickness approx. 0.5 - 0.8 mm.



 **RINOLEP-C531 EW**

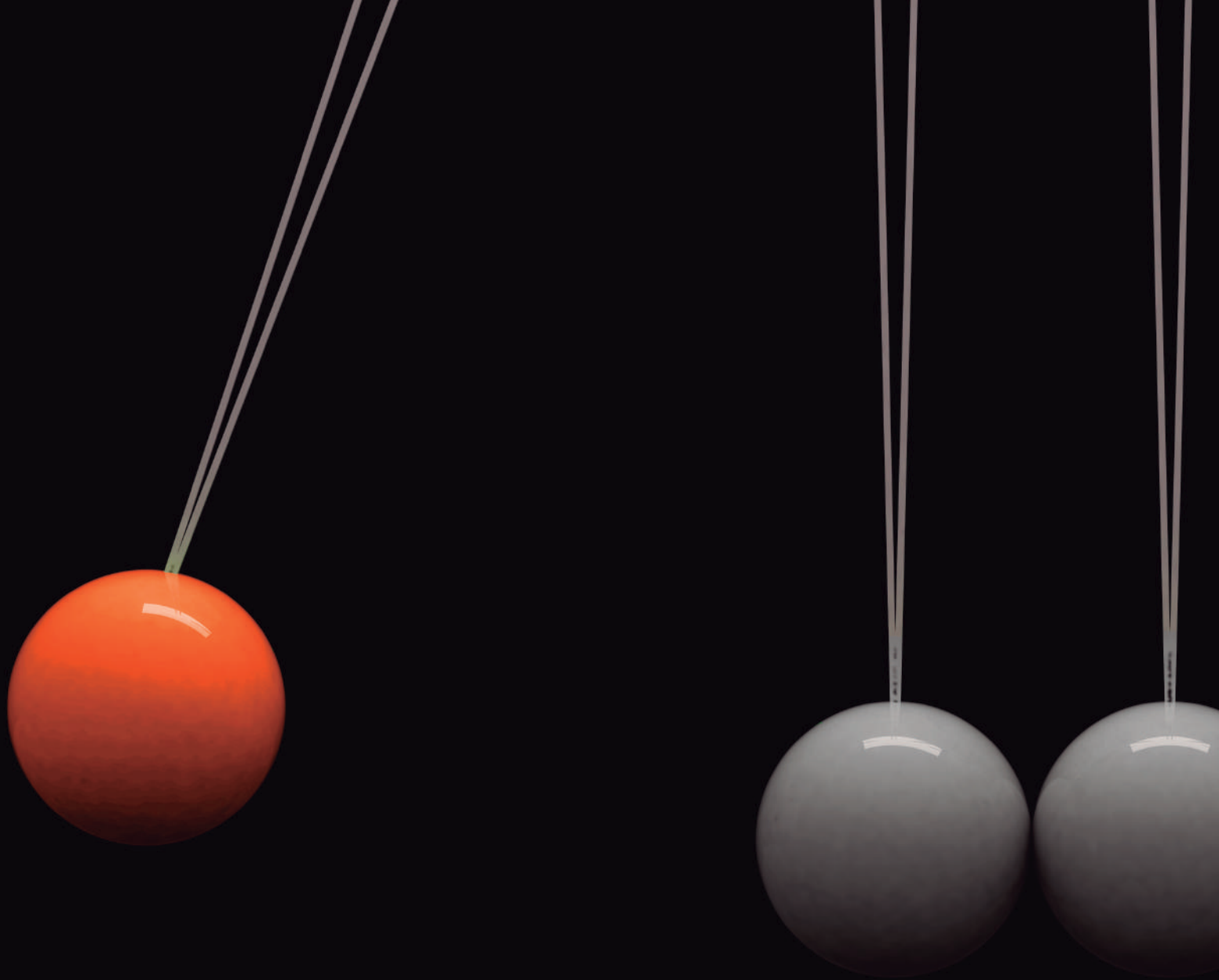
Self-levelling coating

 **RINOLEP-P240**

Water-based primer







**RCR Flooring Products Italia S.r.l.**

Via chiarugi 76/U  
I-45100 Rovigo  
Italy

Tel.: +39 425 411 200

Fax: +39 425 411 222

[info@rinol.it](mailto:info@rinol.it)

[www.rinol.com](http://www.rinol.com)