

1. Product and Treatment Description

RINOL DRT offers an advanced concrete surface treatment solution, meeting the needs of industrial and commercial environments. It uses diamond rotation technology to transform concrete floors into durable and aesthetically pleasing surfaces, with multiple options to choose from. Carefully designed with optimum materials, the RINOL DRT system ensures uniformity and resilience. RINOL DRT sets a new standard in concrete surface treatment, providing unmatched longevity and easy to maintain floors.

2. Benefits

- **Enhanced Durability:** Designed to withstand heavy foot and machinery traffic, reducing the need for frequent repairs or replacement.
- **Aesthetic Flexibility:** Offers a range of finishes to suit different design visions and practical needs.
- **Low Maintenance Cost:** The system's smooth, sealed surface repels dirt and spills, facilitating easy cleaning.

3. Areas of Application

The RINOL DRT system is specifically engineered to serve the diverse needs of the following sectors:

- **Commercial Spaces:** Ideal for high-traffic retail environments such as shopping malls, department stores, and supermarkets, the RINOL DRT system provides a flooring solution that combines aesthetic appeal with the ability to withstand constant foot traffic.
- **Industrial Settings:** In manufacturing plants, assembly lines, and processing facilities where floors must endure heavy machinery and potential chemical exposures, RINOL DRT offers a robust and durable flooring solution. The system's resistance to abrasion and impact keeps floors functional and visually appealing, even in the most demanding conditions.
- **Logistics and Warehousing:** Warehouses, distribution centres, and storage facilities benefit from the RINOL DRT system's capacity to handle the movement of goods, forklift traffic, and the weight of stored items. The system's ease of maintenance and resistance to dust accumulation are particularly valuable in these environments, ensuring safe and efficient operations.
- **Transport Hubs:** Airports, train stations, and bus depots require floors that can manage heavy pedestrian traffic, rolling luggage, and at times, vehicular stress. The RINOL DRT system is up to the task, providing a high-performance surface that maintains its integrity and appearance over time, contributing to a positive and safe traveller experience.

Each of these sectors demands flooring that not only meets functional and safety standards but also contributes positively to the overall appearance and atmosphere of the space. The RINOL DRT system delivers on all fronts, providing a customizable, durable, and low-maintenance flooring solution that stands up to the rigorous of these environments.

4. System Composition

The RINOL DRT system comprises several innovative components, each contributing to the system's effectiveness:

- **RINOL DRT Magnetic Blade Adapter:** A cornerstone of the system, featuring a patented magnetic attachment for swift and secure component changes.
- **RINOL DRT Mounting Pad:** Tailored for the attachment of diamond resin

pieces, it plays a crucial role in the even and efficient polishing process.

- **RINOL Ultimate Pads:** Designed for attachment directly to the magnetic tray, these pads are essential for final finishing touches and routine maintenance.
- **RINOL DRT Diamond Grits:** Available in a spectrum of grits and corresponding colors, these pieces are pivotal in achieving the desired surface finish.
- **RINOL Densifiers:** These products are essential for enhancing the density and hardness of the concrete surface, providing increased resistance to wear and abrasion.
- **RINOL Sealers:** Designed to protect the treated surface from stains, spills, and other contaminants. Sealers provide an additional layer of defense while enhancing the appearance of the floor.

Diamond Metal Pieces - Specification of Grits:

- **RINOL DRT Metal Button (GRIT 50#):** For very aggressive grinding and surface preparation.

Diamond Resin Pieces - Specification of Grits and Colors:

- **RINOL DRT Brown (GRIT 30#):** For aggressive grinding and surface preparation.
- **RINOL DRT Blue (GRIT 50#):** For aggressive grinding and surface preparation.
- **RINOL DRT Black (GRIT 100#):** Smooths out textures after initial grinding.
- **RINOL DRT Gold (GRIT 200#):** Begins the polishing process to enhance shine.
- **RINOL DRT Red (GRIT 400#):** Improves surface gloss and smoothness.
- **RINOL DRT Green (GRIT 800#):** Achieves a semi-gloss finish.
- **RINOL DRT White (GRIT 1500#):** Used for high gloss, mirror-like finishes.
- **RINOL DRT Grey (GRIT 3000#):** Used for high gloss, mirror-like finishes.

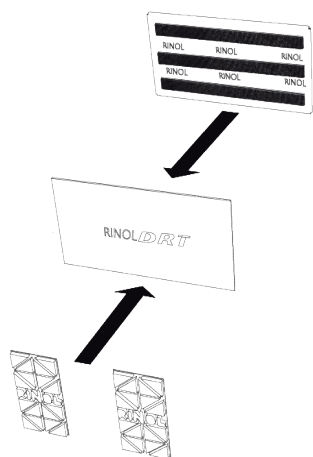
5. Assembly Guide

To ensure the efficient and correct assembly of the RINOL DRT system components, follow these step-by-step instructions along with visual aids provided below:

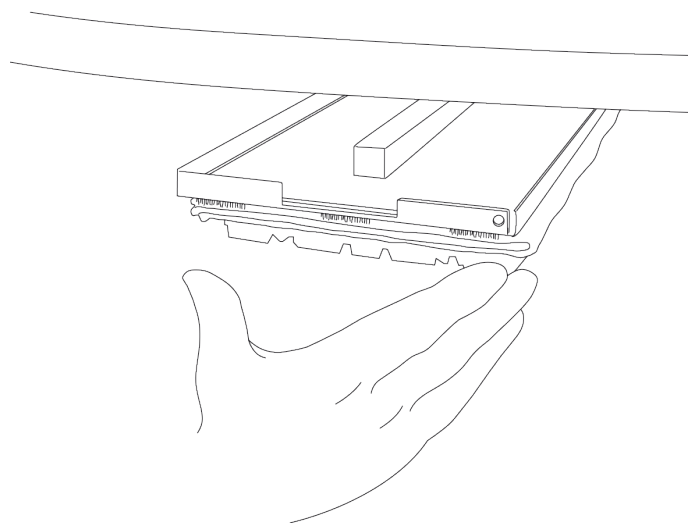
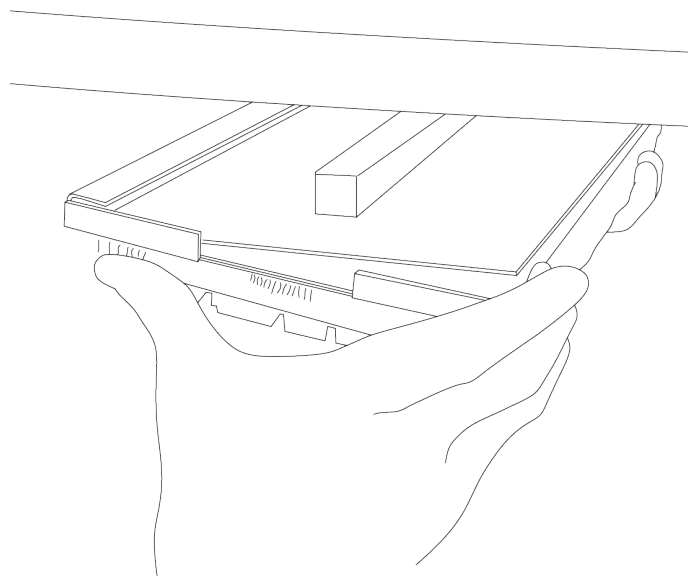
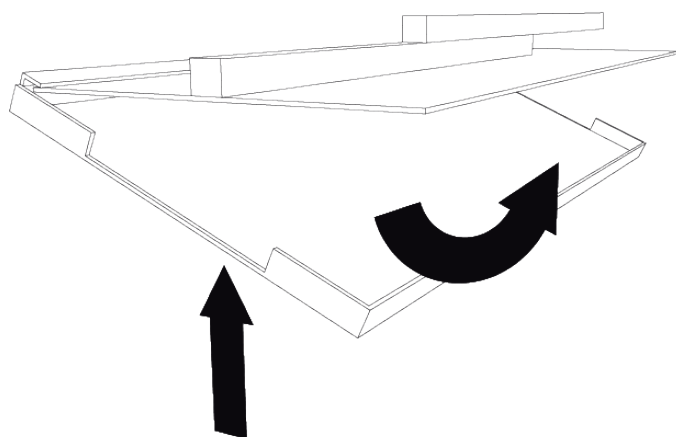
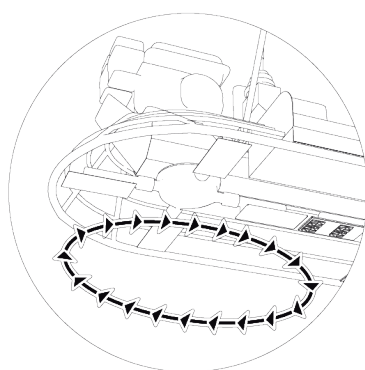
5.1 - Prepare the Surface: Before assembling the system, ensure that the concrete surface is clean, dry, and free of any debris or contaminants.

5.2 - Select and attach RINOL DRT Diamond Grits: Choose the appropriate diamond grits based on the desired surface finish and attach them to the mounting pad.

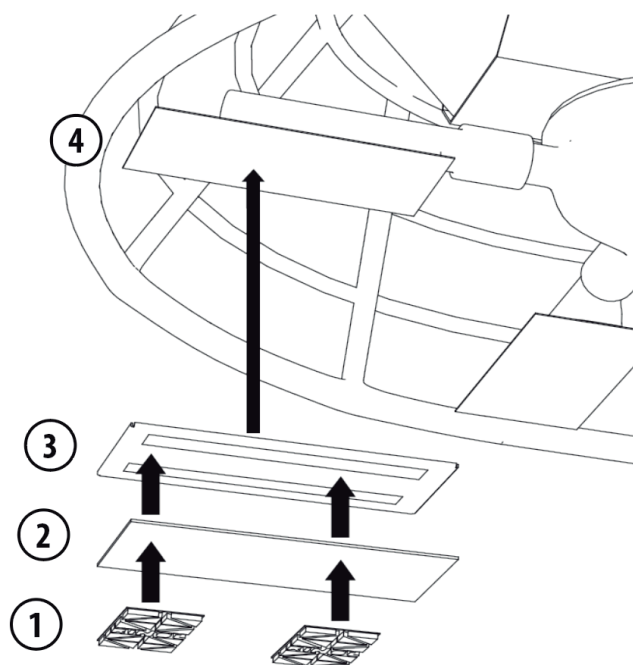
5.3 - Mount the RINOL DRT Mounting Pad: Attach the mounting pad securely to the magnetic blade adapter using the patented magnetic attachment system. Ensure that the mounting pad is positioned centrally and evenly on the plate for an optimal performance.



5.4 - Attach the RINOL DRT Magnetic Blade Adapter: When attaching the RINOL DRT Magnetic Blade Adapter to the power trowel, it is crucial to tilt the adapter, considering the tab's position relative to the blade's rotation direction. Follow these steps to ensure a secure and effective installation:



5.5 - Assembly Overview: This visual aid provides an exploded view of the RINOL DRT system's assembly on a double power trowel. The components are displayed in the following order to illustrate the correct sequence of assembly:



1. **RINOL DRT Diamond Grits:** Positioned at the bottom, these are the first to be attached directly to the concrete surface for grinding and polishing.
2. **RINOL DRT Mounting Pad:** Follows the diamond grits, serving as the base for the diamonds to attach to.
3. **RINOL DRT Magnetic Blade Adapter:** Sits above the mounting pad and is designed to securely hold the assembly onto the power trowel blades.
4. **Power Trowel Blades:** The final element in the assembly where the entire RINOL DRT system is attached

By following these assembly instructions and referring to the provided visual aids, users can ensure the correct installation and alignment of the RINOL DRT system components, resulting in a seamless and efficient concrete surface treatment process.

6. Maintenance Guidelines

The longevity and performance of the RINOL DRT system components are significantly enhanced by regular and proper maintenance. Specific maintenance guidelines include:

For RINOL DRT Grits:

Use a soft brush and soap with a neutral pH to remove excess sediment and ensure optimal adhesion to the velcro. Failure to perform this maintenance can result in decreased adhesion, affecting the efficiency of the polishing process.

For the RINOL DRT Magnetic Blade Adapter:

Clean and dry the tray after each use to prevent the formation of rust. While

rust formation does not impact the functionality of the system, maintaining the tray in good condition extends its usable life and ensures consistent performance.

7. Expert Consultation for Optimal Results

A detailed consultation process with a RINOL specialist is crucial. Given the variety of finishes achievable with the RINOL DRT system, they can recommend the precise combination of diamond resin grits and colors, in addition to the appropriate densifiers, sealers, and pads, to meet the project's requirements. This bespoke plan takes into account the initial condition of the concrete surface, ensuring that the treatment not only achieves the desired aesthetic outcome but also enhances the floor's durability and maintenance characteristics.

8. Customer Service and Support

RCR Flooring Products is committed to providing superior customer support, offering detailed guidance, technical advice, and training to ensure the successful application of the RINOL DRT system.

9. Legal Notice

Due to the different materials, substrates and deviating working conditions, no guarantee of a work result or liability can be assumed by RCR Flooring Products for whatever reason and / or legal relationship. In addition, the latest general terms and conditions of RCR Flooring Products Italia S.r.l. apply, which can be requested from us or viewed and printed out at www.rinol.com. We expressly reserve the right to make changes to the product specifications.

We strive to ensure the accuracy and reliability of the information provided in this document. However, there may be instances of translation errors or typographical mistakes for which we cannot be held responsible. Users are encouraged to request the latest version of this document to ensure they have the most current and accurate information.